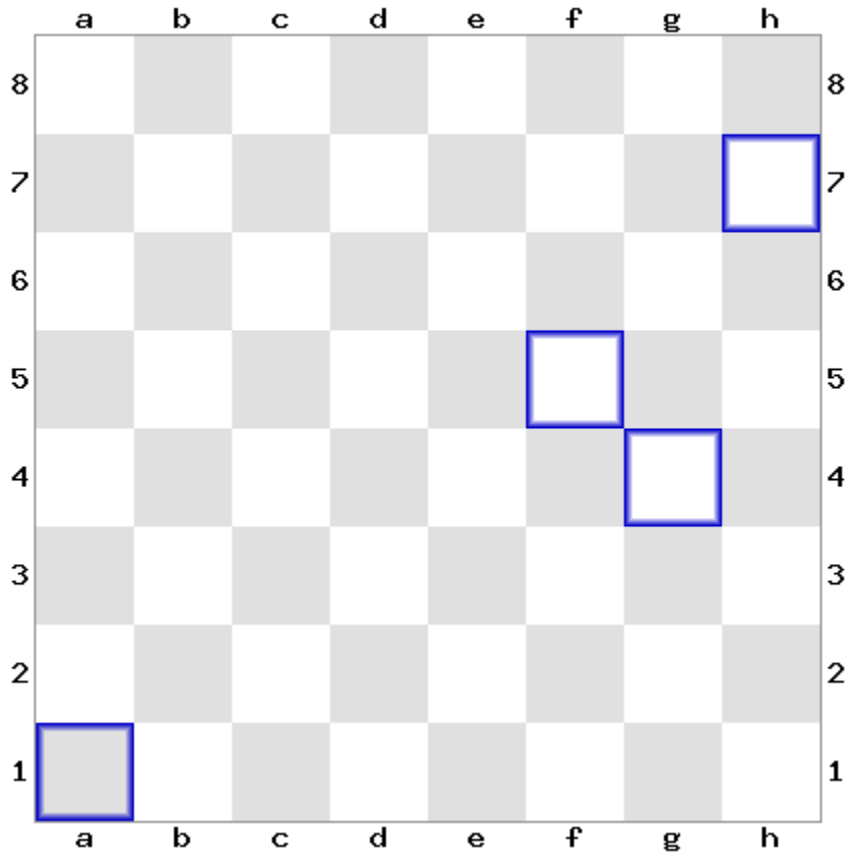


1.



2. Linia 1-a

3. A3

4. C1->H6; F8->H6

5. Rd7/e7->d6->e5->f4/f5->g4 sau Rf7->g7-h6->g5/h5->g4

6. Rd5->d4->c3->b4->b5->c6->c7->d8->e7->f6->e5->f5->g4->f3->e2

7. Ra2->a3->a4->b5->b6->a7->b8->c8->d8->e8->e7->d6->d5->d4->c3->b2->b1->c1->d1->d2->e2->f3->f4->g5->f6->g7->f8->g8->h7->h6->h5->h4->h3->h2->g1->f1 sau alte variante similare

8. Rxh2->h3->g3->g4->g5->g6->h7->h8->g8->f7->e8->d8->e7->f6->e6->d5->e4->f3->f2->g1->f1->e2->d2->c3->c2->b1->a1->a2->b3->b4->a5->b5->c6->b7->a8

9. Dxc6

10. Cxe3

11. Rh2 #

12. Dh5 #