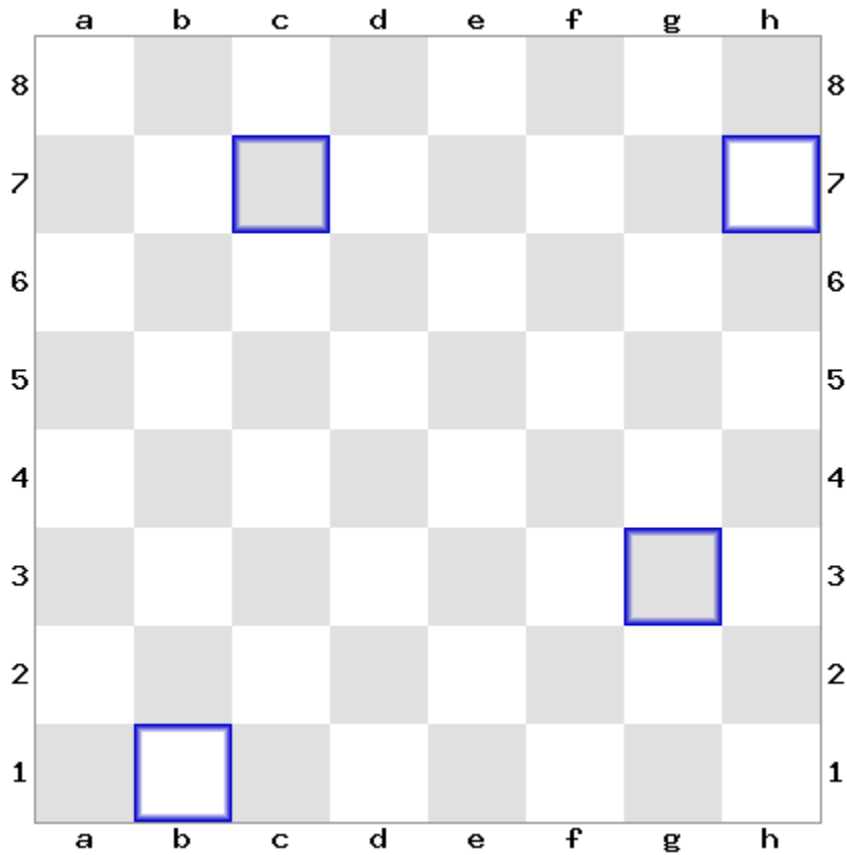


1.



2. Coloana B

3. E4

4. B1->H7; H4->C8

5. Rd5/Re5/Rf5->Re4

6. Rc4->Rd3/Rd4->Re3 sau Rc5->Rd4->Re3

7. Rf7->Rg6->Rg5->Rg4

Exista si alte variante (10 in total)

8. Rxe5->Rxd5->Rxd4->Rxc3->Rxb4->Rxb5->Rxc6->Rxc7->Rxd8->Rxe7->Rxf6->Rxf5->Rxf4->Rxf3->Rxe2

Exista si alte variante (3 in total)

9. Dxa5

10. Txd5

11. Dh7 #

12. Nf6 #